

THE GOAL:

To encourage and improve academic success in all children by creating safe, positive learning environments.

Positive Behavioral Interventions and Support is an evidence-based, data-informed process that works to increase student achievement, school attendance, and school success while decreasing challenging student behaviors.

By using a systemic approach that incorporates all students, staff, parents, and settings, NPBiS can create safer and more effective schools.

Best of all, PBiS is proven to work. Programs across the country and also in Nebraska have met with resounding success, proving that the PBiS approach to behavior and learning is general enough to assist all students, but focused enough to provide students at risk the individualized help they need to be successful.



GET INVOLVED

- ▶ Contact the NPBiS Project Coordinator for specific details on how your school or district can participate in this program. The contact information is below.
- ▶ We encourage you to contact one of the many Nebraska schools that are engaged in NPBiS implementation. There is no better way to see how NPBiS works than to get it from the source!
- ▶ Nebraska has received a State Personnel Development Grant (SPDG) to support increased achievement and positive behavior for children with disabilities and their non-disabled peers. For more information, please contact the NPBiS Project Coordinator.

CONTACT NPBiS

NPBiS PROJECT COORDINATOR: JOLENE PALMER
Email: jolene.palmer@nde.ne.gov | www.npbis.org
Ph: (402) 471-2944
Fax: (402) 471-8127

NEBRASKA DEPARTMENT OF EDUCATION
301 CENTENNIAL MALL SOUTH
LINCOLN, NE 68509-4987

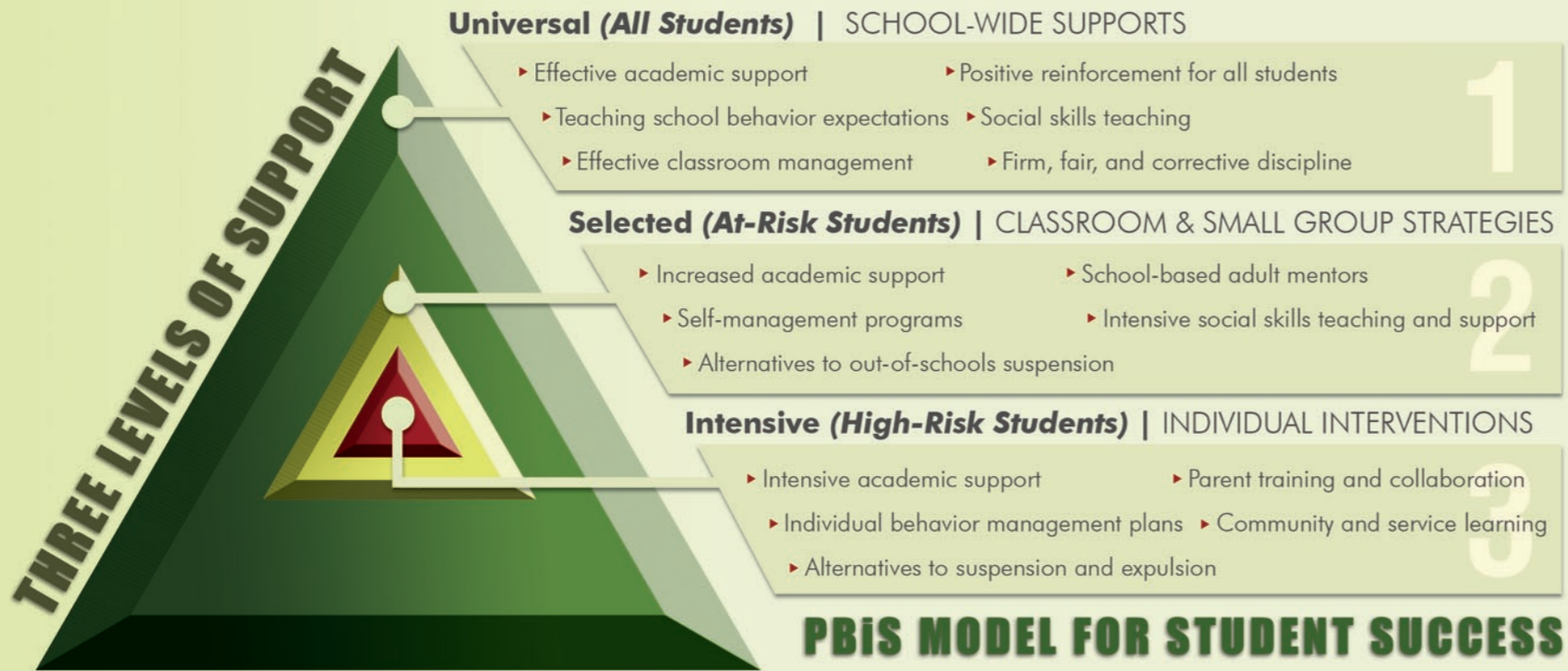
NEBRASKA DEPARTMENT OF EDUCATION

**SYSTEMATICALLY
IMPROVING
THE SCHOOL
ENVIRONMENT**



NPBiS

Nebraska Positive Behavioral
Interventions and Supports



PBIS MODEL FOR STUDENT SUCCESS

PBIS...

- ▶ Is an approach to preventing problem behavior
- ▶ Benefits all students, and is not limited to any particular group
- ▶ Is based on effective behavioral practices, instructional design, and strategies
- ▶ Fosters positive adult-to-student relationships
- ▶ Supports the local school continuous improvement process
- ▶ Is focused on learning

COMPONENTS

- ▶ One common approach to behavior; one common school-wide language
- ▶ Positively stated expectations for all students and staff
- ▶ Procedures for teaching expectations
- ▶ Processes for encouraging demonstration and the maintenance of expectations
- ▶ Strategies for discouraging rule-violating behavior and encouraging positive behavior
- ▶ Methods for monitoring and evaluating program effectiveness on a regular and frequent basis

PBIS: IT SIMPLY WORKS

CURRENT NEBRASKA RESULTS ARE VERY POSITIVE

Teachers used new behavior strategies, and were better equipped to meet the needs of all students

Teachers found increased time for instruction with fewer behavior problems

Students had fewer disciplinary office referrals and in-and-out of school suspensions

Violent and aggressive behaviors decreased

Families were more comfortable voicing concerns and were more willing to listen to concerns from teachers

Families were more positive about school in general

Families were more positive about discipline because policies, rules, and expectations were clear

Families believed their children were safer at school

Consistent expectations made rules easier to enforce

Source: NSIG Exec. Summary 2006